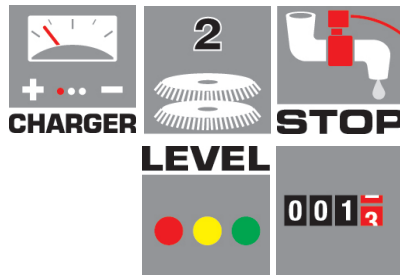




## ComfortXS-R 85 UP

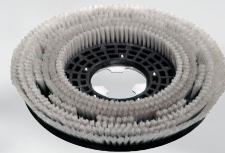


### Standard equipment:

- 4.508.1195 - Rear Squeegee
- 4.508.1196 - Front Squeegee



- 5.511.1688 - Brush (x2)



- 0.108.0054 Battery Charger

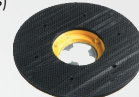


### Optional:

- 6.508.0032 - Light Abrasive Pad (Beige)
- 6.508.0039 - Medium Abrasive Pad (Green)
- 6.508.0046 - Hard Abrasive Pad (Black)



- 5.511.1107 EQU Driver Pad (Required for Abrasive Pads)



- 0.077.0003 15lt Maintain

\* For new floors



- 0.077.0006 15lt Scrubsol

\* For older floors



### Equipped with:

- Suitable for deep cleaning of large areas up to 4000m<sup>2</sup>
- Double Counter Rotating Brush with 50+kg Constant Pressure
- Great Working Autonomy due to 4 x 6V Batteries
- Independent Front Wheel Drive with Tight Steering Radius
- Recovery Tank Control Window for Cleaning and Easy Maintenance
- Automatically Stops Brushes and Detergent Outflow when Stationary
- Self-Levelling Brush Plate
- Automatic Detergent Measuring System

ComfortXS-R 85 BT	
Code	8.579.0002
Power Supply	24v (4 x 6v Batteries Supplied)
Scrubbing/Squeegee Width	850mm / 900mm
Detergent / Recover Tank Capacity	110 litre / 155 litre
Vacuum Motor	480W
Traction	Independent Front Wheel Drive
Dimension/Weight	116x51x98cm/116 Kg