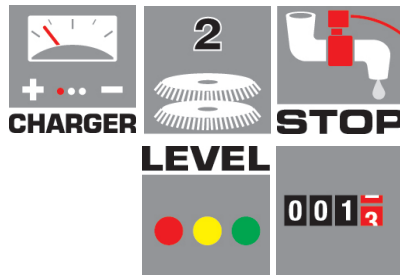




ComfortXXS 66 BT

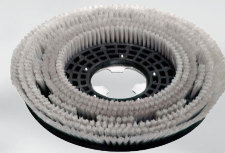


Standard equipment:

- 4.508.0467 - Rear Squeegee
- 4.508.0468 - Front Squeegee



- 5.511.1789 - Brush (x2)



- 0.108.0054 Battery Charger

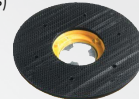


Optional:

- 6.508.0030 - Light Abrasive Pad (Beige)
- 6.508.0037 - Medium Abrasive Pad (Green)
- 6.508.0044 - Hard Abrasive Pad (Black)



- 5.511.1107 EQU Driver Pad (Required for Abrasive Pads)



- 0.077.0003 15lt Maintain

* For new floors



- 0.077.0006 15lt Scrubsol

* For older floors



Equipped with:

- Suitable for deep cleaning of large areas up to 3200m²
- Double Counter Rotating Brush with 32kg Constant Pressure
- Great Working Autonomy due to 4 x 6V Batteries and Rear Wheel Drive
- Ergonomic Steering Wheel Design with User Friendly Controls
- Inspection Cover for Fast and Easy Cleaning of Water Tank
- Automatically Stops Brushes and Detergent Outflow when Stationary
- Self-Levelling Brush Plate
- Automatic Detergent Measuring System

ComfortXXS 66 BT	
Code	8.579.0002
Power Supply	24v (4 x 6v Batteries Supplied)
Scrubbing/Squeegee Width	660mm / 855mm
Detergent / Recover Tank Capacity	75 litre / 80 litre
Vacuum Motor	2 x 400W
Traction	Rear Wheel Drive
Dimension/Weight	123x63x121cm/160 Kg